

©  
ORIGINALSTYLE  
Core Collection





Almond Crackle Bevel 4" x 8" CC-ALM0408CRB, Almond Crackle Bevel Corner 4" x 4" CC-ALM0404CNRCR, Almond Quarter CC-ALMQTR

# Core Collection

the key to a timeless look

Welcome to the new Core Collection. It's our latest range and we've created it specifically for the American marketplace. The tiles and mouldings are made to our highest quality standards.

We went back to basics when creating the range and asked one simple question – what are the key elements to consider when choosing tiles for your bathroom and kitchen?

Here's what we came up with:

- a neutral, co-ordinating color palette
- a carefully selected number of complementing pieces
- make choosing a pleasure not a dilemma
- quality with a competitive price structure

Explore the Core Collection...

sometimes the simplest  
ideas are the best

# it's a simple concept

Why reinvent the wheel?

The subway tile is such a well-loved American classic, we were inspired to base the whole Core Collection around it.

Three different sized bricks, all with bevel options.

Three mouldings. Four colors, plus one crackle finish. That's it!

All you need for a timeless look in your bathroom, kitchen, laundry or mudroom.



Almond Brick 4" x 8" CC-ALM0408, Almond Pencil CC-ALMPNL (with Rimini Taupe Matt Floor Tiles CS810-6030 from the Tileworks Collection)





White Brick 3" x 6" CC-WHT0306, White Capping CC-WHTCAP





White Bevel Brick 3" x 6" CC-WHT0306B, Black Capping CC-BLKCAP  
(with Black and White Honeycomb Floor Mosaics CS-HNYCOMWB see page 14)

## fresh colors clean lines

The long brick 3" x 12" and wider brick 4" x 8" are today's take on the familiar subway 3" x 6". You can add dimension with the bevel bricks too.

Define the edges with contrasting tiles and mouldings for a smart finish.

Core Collection tiles have been designed to co-ordinate with our porcelain floor mosaics – see page 14.



Almond Brick 4" x 8" CC-ALM0408



Black Brick 3" x 12" CC-BLK0312, Black Pencil CC-BLKPNL



Right: Almond Crackle Bevel 4" x 8" CC-ALM0408CRB,  
Almond Crackle Bevel Corner 4" x 4" CC-ALM0404CNRCR,  
Almond Quarter CC-ALMQTR  
(with Genoa Natrale Matt Floor Tiles CS496-3030  
from the Tileworks Collection)

functional pieces  
timeless style

Ring the changes with different tile layouts such as brick bond, chevron and herringbone. Use the mouldings to frame and highlight as well as edging the top row of tiles.



Top: Grey Bevel 3" x 12" CC-GRY0312B, Black Bevel 3" x 6" CC-BLK0306B (with Natural Marble Basketweave White with Black Dot EW-BSKWHITE from the Mosaics Collection),  
Above: Grey Brick 4" x 8" CC-GRY0408



# the collection

## 3" x 6" Brick



White: CC-WHT0306



Almond: CC-ALM0306



Almond Crackle\*: CC-ALM0306CR

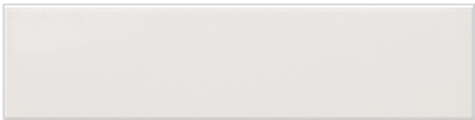


Grey: CC-GRY0306



Black: CC-BLK0306

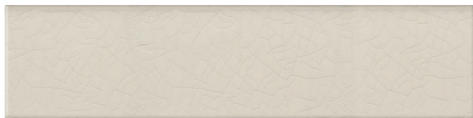
## 3" x 12" Brick



White: CC-WHT0312



Almond: CC-ALM0312



Almond Crackle\*: CC-ALM0312CR



Grey: CC-GRY0312



Black: CC-BLK0312

## 4" x 8" Brick



White: CC-WHT0408



Almond: CC-ALM0408



Almond Crackle\*: CC-ALM0408CR



Grey: CC-GRY0408



Black: CC-BLK0408

## 3/8" x 6" Quarter Round



White: CC-WHTQTR



Almond: CC-ALMQTR



Grey: CC-GRYQTR



Black: CC-BLKQTR

## 3/4" x 6" Pencil



White: CC-WHTPNL



Almond: CC-ALMPNL



Grey: CC-GRYPNL



Black: CC-BLKPNL

## 1 1/8" x 6" Capping



White: CC-WHTCAP



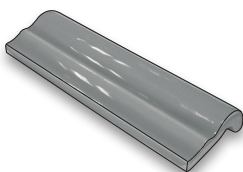
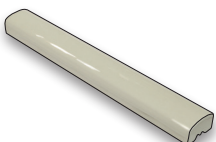
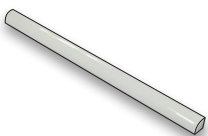
Almond: CC-ALMCAP



Grey: CC-GRYCAP



Black: CC-BLKCAP



3" x 6" Bevel Brick



Almond Crackle\*: CC-ALM0306CRB



Almond: CC-ALM0306B



White: CC-WHT0306B



Black: CC-BLK0306B

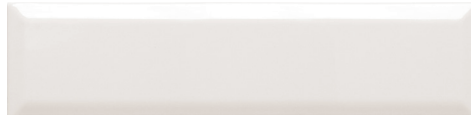


Grey: CC-GRY0306B

3" x 12" Bevel Brick



Almond: CC-ALM0312B



White: CC-WHT0312B



Almond Crackle\*: CC-ALM0312CRB



Black: CC-BLK0312B

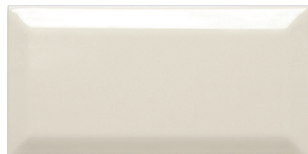


Grey: CC-GRY0312B

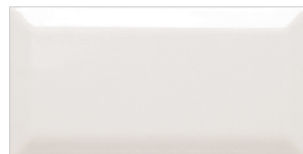
4" x 8" Bevel Brick



Almond Crackle\*: CC-ALM0408CRB



Almond: CC-ALM0408B



White: CC-WHT0408B



Black: CC-BLK0408B



Grey: CC-GRY0408B

3" x 3" Bevel Corner



White:  
CC-WHT0303CNR



Almond:  
CC-ALM0303CNR



Almond Crackle\*:  
CC-ALM0303CNR CR



Grey:  
CC-GRY0303CNR



Black:  
CC-BLK0303CNR

For use with  
3" x 6" and 3" x 12"  
bevel bricks

4" x 4" Bevel Corner



White:  
CC-WHT0404CNR



Almond:  
CC-ALM0404CNR



Almond Crackle\*:  
CC-ALM0404CNR CR



Grey:  
CC-GRY0404CNR



Black:  
CC-BLK0404CNR

For use with  
4" x 8" bevel bricks

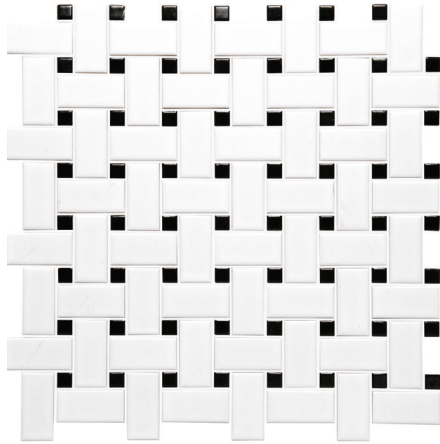
Suitability:



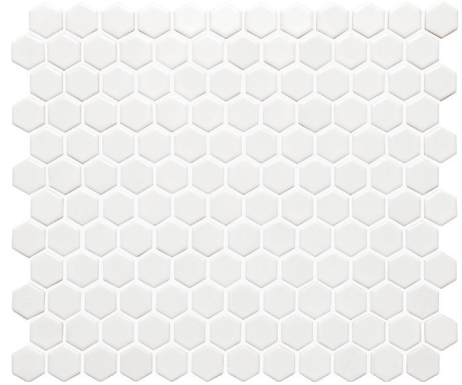
\*crackle glazed tiles are not  
suitable for use with  
power showers

# co-ordinating floor mosaics

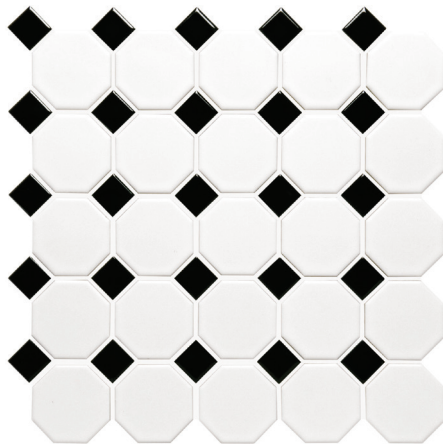
Suitability:   



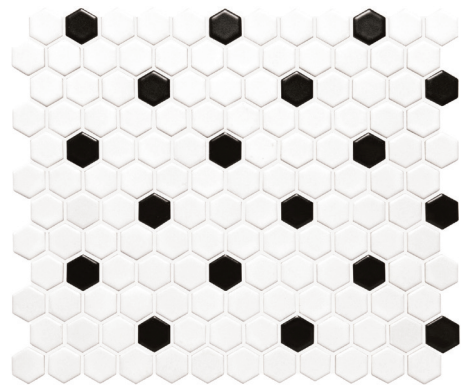
Basketweave CS-BSKMOS  
11¾" x 11¾" x ¼"



White Honeycomb CS-HNYCOMW  
10⅞" x 11¾" x ¼"



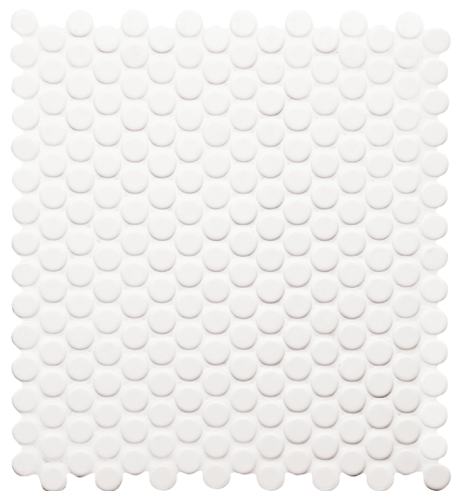
Classic Octagon & Dot CS-OCTDOT  
11½" x 11½" x ¼"



Black & White Honeycomb CS-HNYCOMWB  
10⅞" x 11¾" x ¼"



Basketweave CS-BSKMOS



Moonbeam Penny Round CS-PRMOON  
11½" x 12¼" x ¼"

# important information

### Shade Variation

Shade variation is an inherent feature of the manufacturing process of Core Collection wall tiles. We recommend that tiles are loosely laid out and blended prior to fixing to achieve the most pleasing distribution of shades. Differences between batches can be more marked, so for this reason we recommend that you buy all the tiles at one time. No liability for shading issues can be accepted after installation.

### Nominal Dimensions

Throughout this brochure we quote nominal dimensions. The work sizes in the international BS EN 14411 Standard detail the size specification ranges. Original Style dust pressed and extruded tiles and trims are manufactured and tested to the European Standard BS EN 14411:2012. The tiles fall within the ANSI A137.1 Tile Classification, Non Vitreous P4/E4 with a water absorption of  $7.0\% \leq w_a \leq 20.0\%$ .

### Scratching

As with all glazed surfaces, some wearing or scratching may occur over time. Care should therefore be taken to select the proper tile for a given use. The wall tiles shown in this brochure are not recommended for surfaces subject to heavy wear.

### Crazing and Crackle Glaze Tiles

Highly glazed ceramic tiles may craze with time, and no guarantee can be given against this occurrence. Crackle glaze tiles need to be sealed both before and also after grouting. Ensure they are completely dry before sealing. **Crackle glaze tiles are not recommended for use near power showers.** Please refer to the Fixing Guide at [www.originalstyle.com/guides](http://www.originalstyle.com/guides)

### Suitability

Core Collection wall tiles are not suitable for work surfaces, floors or external use. They are suitable for interior walls only, including walls in wet rooms and showers.

The reverse sides of mouldings are prone to variance. This does not affect fixing. We cannot guarantee that glaze will cover the side edges of the profiles on page 12.

Porcelain Floor Mosaics are suitable for interior and exterior walls including walls in wet rooms and showers. They are suitable for dry floors but must not be used in wet floor areas, such as showers.

### Installation, adhesives and grouts

It is important to use the correct adhesive to match the substrate. We recommend D1 or D2 wall tile adhesives for Core Collection tiles and mouldings which are placed on plasterboard or plaster walls. For all other substrates a flexible cement based adhesive may be required. Please consult your tile stockist or adhesive manufacturer for their advice. Always use high quality adhesives and grouts following manufacturers' recommendations for their use and suitability for the type of tile, the application and the substrate being tiled. In all installations, seal joints with an impervious grout. If joints are not completely watertight, moisture can be absorbed into the tile body causing stains to show through the glaze. Use an average grout space of at least  $\frac{1}{16}$ " to allow for variations in tile dimensions. When installing in power showers, epoxy grout must be used. Do not install Original Style tiles directly into wet cement or sand and cement. It is imperative to follow grout and adhesive manufacturers' instructions regarding their suitability with our products. If in doubt please consult the grout/adhesive stockist from whom you purchased the products. Original Style makes no representations as to the fitness for purpose of third party adhesives and grouts.

All black glazed products are traditionally more susceptible to showing marks and residues. Following grouting we recommend that black glazed tiles are cleaned with products that remove marks and any grout residue. An acidic cleaner is suitable, such as FILA Deterdek and Lithofin KF Ceramic Clean which are widely available in the United States. Routine cleaning as below is then applicable.

### Sealing Joints

In all installations, especially shower cubicles, joints should be sealed with an impervious grout or an epoxy type. Joints between tiles and shower trays should be sealed with silicone sealant. If joints are not completely watertight, moisture can be absorbed into the tile body causing stains to show through the translucent glaze.

### How many tiles will you need?

Tile type	Nominal Size	Tiles per square ft*
Brick, Bevel Brick	3" x 6"	8
Bevel Corner	3" x 3"	16
Brick, Bevel Brick	4" x 8"	4.5
Bevel Corner	4" x 4"	9
Brick, Bevel Brick	3" x 12"	4

Moulding type	Nominal Length	Tiles per linear ft*
Pencil, Quarter Round, Capping	6"	2

\*Based on a  $\frac{1}{16}$ " grout gap. Please allow 5% extra for wastage

Floor Mosaics	Nominal Size	Sheets per square ft*
Basketweave	11 $\frac{3}{4}$ " x 11 $\frac{3}{4}$ "	1.04
Classic Octagon & Dot	11 $\frac{1}{2}$ " x 11 $\frac{1}{2}$ "	1.09
Moonbeam Penny Round	11 $\frac{1}{2}$ " x 12 $\frac{1}{4}$ "	1
Honeycomb White Honeycomb Black & White	11 $\frac{3}{4}$ " x 10 $\frac{1}{8}$ "	1.2

### Cleaning

Original Style Core Collection tiles should be rinsed with clean water and wiped off with a soft, dry cloth in exactly the same way as normal glazed wall tiles.

Do not use abrasive cleaners or materials on any tiles or mouldings.

In USA please follow the recommendations of reputable product manufacturers in conjunction with our Fixing Guide at [www.originalstyle.com/guides](http://www.originalstyle.com/guides) and always comply with American National Standards Institution (ANSI) specifications as set out in the Handbook for Ceramic Tile Installation published by the Tile Council of America. Useful links: [ctioa.org](http://ctioa.org), [tileusa.com](http://tileusa.com)

### Photography

Owing to variations in studio lighting and printing inks, the tile colors shown in this brochure may differ slightly from those of the actual tiles. It is always advisable to ask your Original Style supplier to show you a sample.

### Limits of Liability

Original Style accepts no liability for the faulty installation of its products. In the case of any claim relating to the tiles themselves, Original Style's liability, to the extent permitted by law, is limited to either the replacement of the product or a refund of the cost of the product, and does not extend to cover any consequential loss. Claims must be reported within seven working days from receipt of the tiles.

Tiles must be inspected prior to installation and claims cannot be considered after the tiles have been installed.

Please be advised that installation constitutes acceptance of the quality, color, size, texture and shade of the tiles. Original Style warrants that its tiles conform to their description and are fit for their purpose. Original Style makes no other express or implied warranty as to fitness or suitability of the products for particular installations. We extend no guarantees, express or implied, as to wear resistance or maintenance procedures.

## Key for symbols



Wet & dry walls  
(inc showers & wet rooms\*)



Dry floors only



Internal use only

\*crackle glazed tiles are not suitable for use with power showers



**USA SALES**

**Tel:** 508 507 6228

**Fax:** 1-866 881 6609 (toll free)

**Email:** [info@originalstyle.com](mailto:info@originalstyle.com)

**Website:** [www.originalstyle.com](http://www.originalstyle.com)

The 'Original Style' logo is a registered trade mark of Original Style Ltd.  
Original Style Limited is registered in England number 3018117. Registered Office:  
Falcon Road, Sowton Industrial Estate, Exeter, Devon EX2 7LF, England

Your Original Style stockist

\$1.50

Printed using Vegetable inks



TCC-USA1/06/17